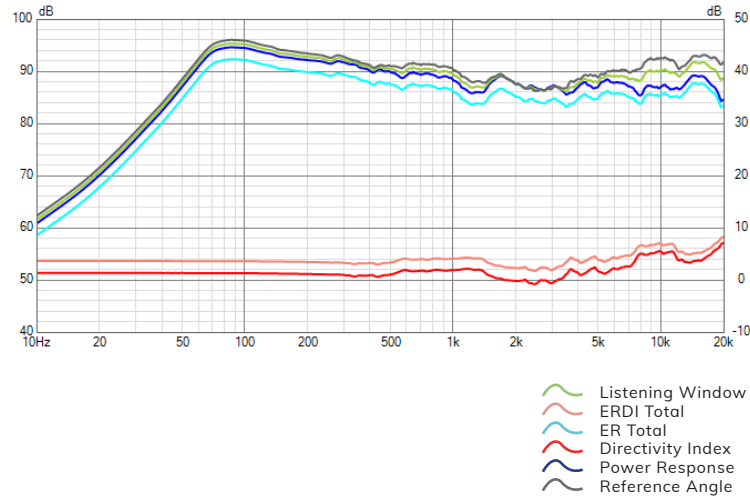
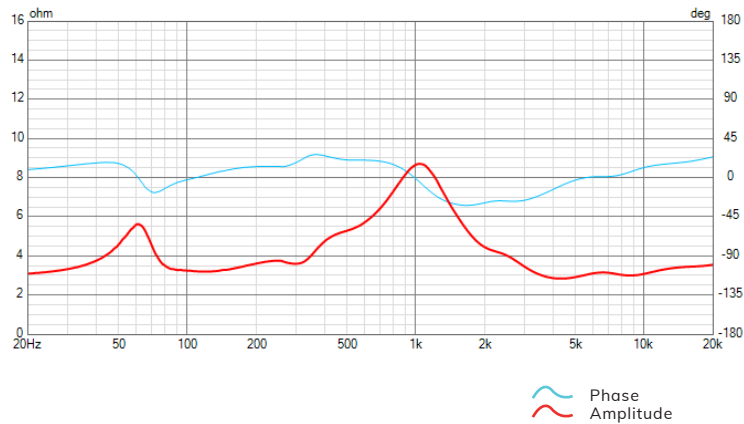


ARENA 30

Frequency Response

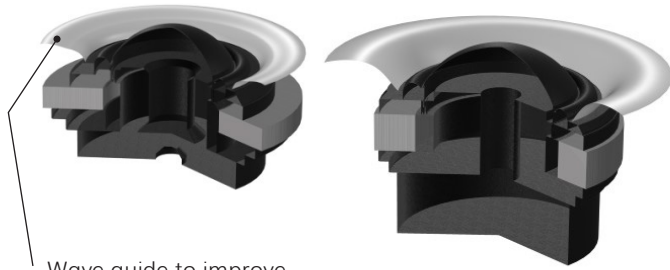


Impedance Amplitude and Phase



Arena 30 is a 4 way LCR speaker, equipped with a 38mm Silk Dome Tweeter paired with a 19mm Super Tweeter to improve the high frequencies reproduction. Two 8" long excursion woofers and The Voice of Sonus faber to complete the pairing of tweeters with two 6.5" mid-woofers with phase plug for better angular dispersion. All with natural paper pulp membranes.

Sf.

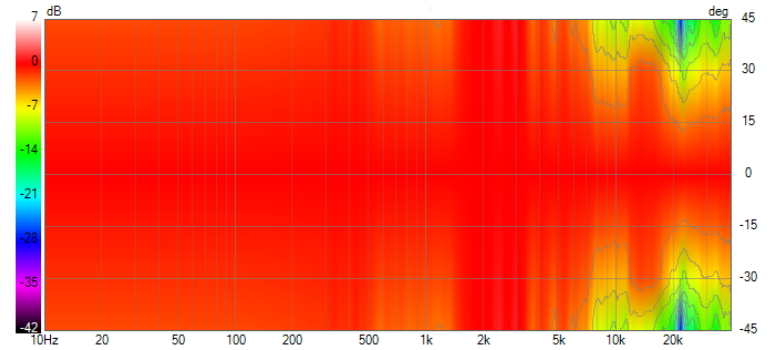


Wave guide to improve response at high frequency

Technical Specifications

Speaker type	4 way	
Low frequency transducer	2 x 8 in	
Mid/High frequency transducer	2 x 6,25 in - 38 mm Dome Tw + 19 mm Super Tw	
Maximum recommended power	600 W	
Frequency Response (-6dB on-axis)	40 Hz	32.200 Hz
Frequency Response (-3dB on-axis)	50 Hz	26.200 Hz
Max SPL 1 Meter	122 dB	
Sensitivity 2.83 Vrms@1m	94,00 dB	
Nominal Impedance	4 Ω	
Minimal impedance	2,9 Ω	
Crossover frequencies	200 Hz / 2k Hz / 10k Hz	
Enclosure type	Closed Box	
Mounting Depth	162 mm - 6,4 in	
Weight	58,7 kg - 129,4 lb	
Depth	167 mm - 6,6 in	
Width	321 mm - 12,6 in	
Height	1.774 mm - 69,8 in	

Horizontal Contour Plot (normalized)



Time Spectral Decay

