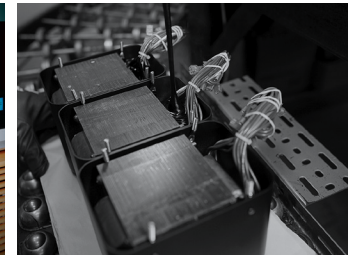


MC830 power amplifier

- The MC830 is a 1-Channel Solid State Amplifier that features an open chassis industrial design similar to our popular MC275 Vacuum Tube Amplifier, C8 Vacuum Tube Preamplifier, and MA252 and MA352 Integrated Amplifiers.
- Direct coupled output design that is rated at 300 Watts at 8 Ohms or 480 Watts at 4 Ohms.
- Fast-responding Dual Scale Watt meter gives an accurate readout of power output for both speaker impedances.
- Monogrammed Heatsinks™ add visual appeal and will keep the MC830 running cool for optimum performance.
- Power Guard® technology monitors the output signal to protect your speakers against being over driven.
- Sentry Monitor™ technology monitors the output current and shuts the amplifier off if it ever exceeds safe limits.
- Solid Cinch™ speaker binding posts easily secure your speaker cables to prevent them from coming loose and possibly causing a short.
- Power Control ports allow for easy system power up and shutdown by sending power on/off signals to other connected McIntosh components.
- User selectable Auto Off feature will turn off the MC830 after 30 minutes if no audio signal is received.



Retro Styled McIntosh Power

McIntosh®

LEGENDARY PERFORMANCE®

www.mcintoshlabs.com

MC830 power amplifier

Power Output:

300 Watts into 8 Ohms
480 Watts into 4 Ohms

Total Harmonic Distortion:

0.005% maximum from 20Hz to 20kHz

Signal to Noise Ratio:

Balanced: 120dB
Unbalanced: 118dB

Dynamic Headroom:

2dB

Damping Factor:

Greater than 100

Frequency Response:

+0, -0.25dB from 20Hz to 20kHz
+0, -3.0dB from 10Hz to 100kHz

Inputs:

1 Balanced
1 Unbalanced

Overall Dimensions (W x H x D):

12-9/32" (31.2cm) x 9-1/2" (24.1 cm)
x 16" (40.6cm)

Weight:

48 lbs (21.8 kg),
55 lbs (24.9 kg) in shipping carton

For the Consumer's Protection:

In order to ensure the highest level of customer satisfaction, new McIntosh products may only be purchased from an Authorized McIntosh Dealer; and, with certain limited exceptions may only be purchased over-the-counter or delivered and installed by the Authorized McIntosh Dealer. McIntosh does not warrant, in any way, products that are purchased from anyone who is not an Authorized McIntosh Dealer, or that have had their serial numbers altered or defaced.



Companion Products

The C8 Vacuum Tube Preamplifier, MT2 Precision Turntable, MCD350 SACD/CD Player, MS500 Music Streamer and XR100 Loudspeakers are logical companions for the MC830 Power Amplifier. Your Authorized Dealer can provide additional information on other McIntosh product combinations.

To learn more, please call us at 1.800.538.6576.

McIntosh®

LEGENDARY PERFORMANCE®

www.mcintoshlabs.com